

# Fe-Cu-REE

# U-Pb

## Re-Os

\*

1 2

1\*\*

1

1

3

1

1 2

1 2

YE XianTao<sup>1 2</sup> ZHU WeiGuang<sup>1\*\*</sup> ZHONG Hong<sup>1</sup> HE DeFeng<sup>1</sup> REN Tao<sup>3</sup> BAI ZhongJie<sup>1</sup> FAN HongPeng<sup>1 2</sup> and HU WenJun<sup>1 2</sup>

1. 550002

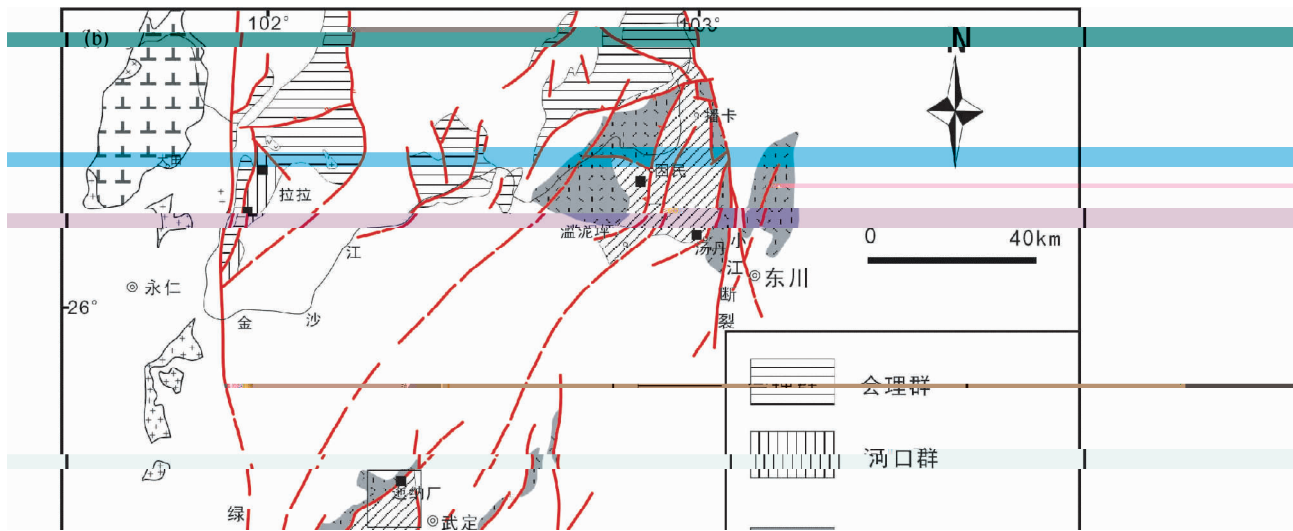
2. 100049

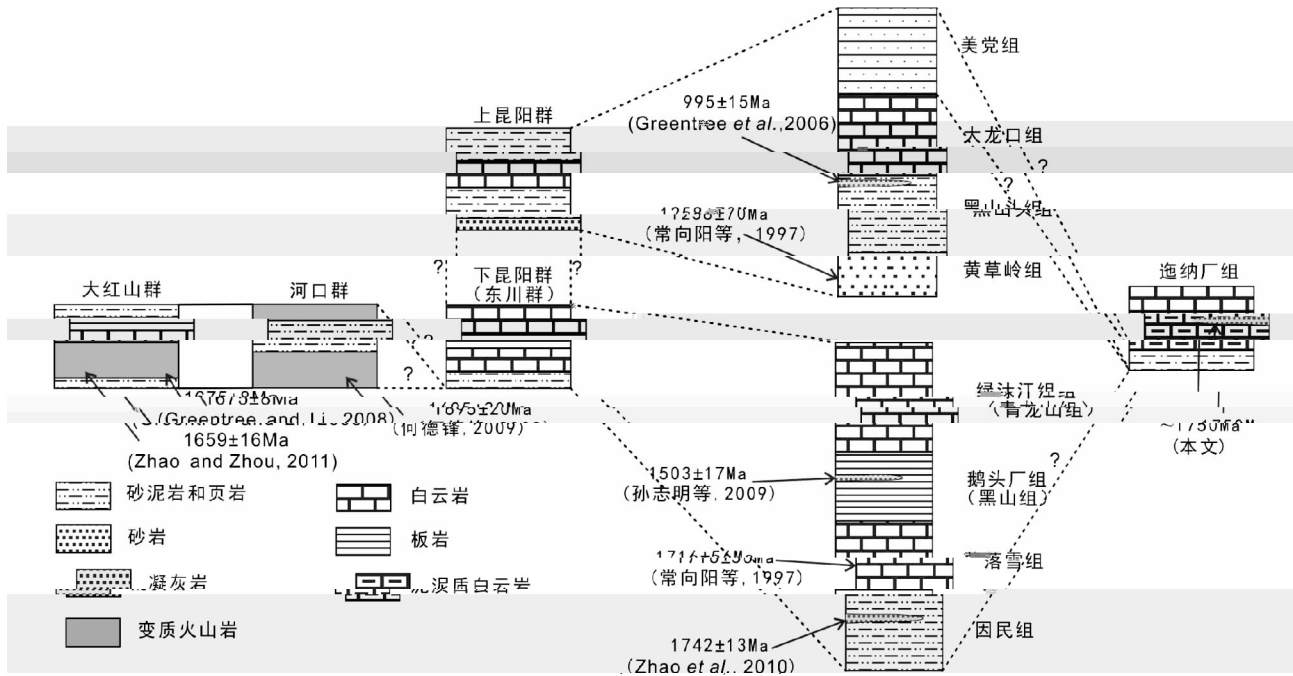
3. 650093

1. 550002

2.







2

Zhao and Zhou 2011

Fig.2 Stratigraphic sequences of Kuyang Group in the Kangdian region after Zhao and Zhou 2011

1032 ± 9Ma

2007

1.8 ~ 1.0Ga

400 ~ 700m

1000m 3.93 ~ 4.31m 200m

3

Fe-Cu-REE

0.85% ~ 0.97%

41.93% ~ 44.53%

1989

2004

2004

3

1mm

1cm

4a

5a b

5c d

70% 4c

5e

0.5 ~ 20cm

4b

5f

4d

8

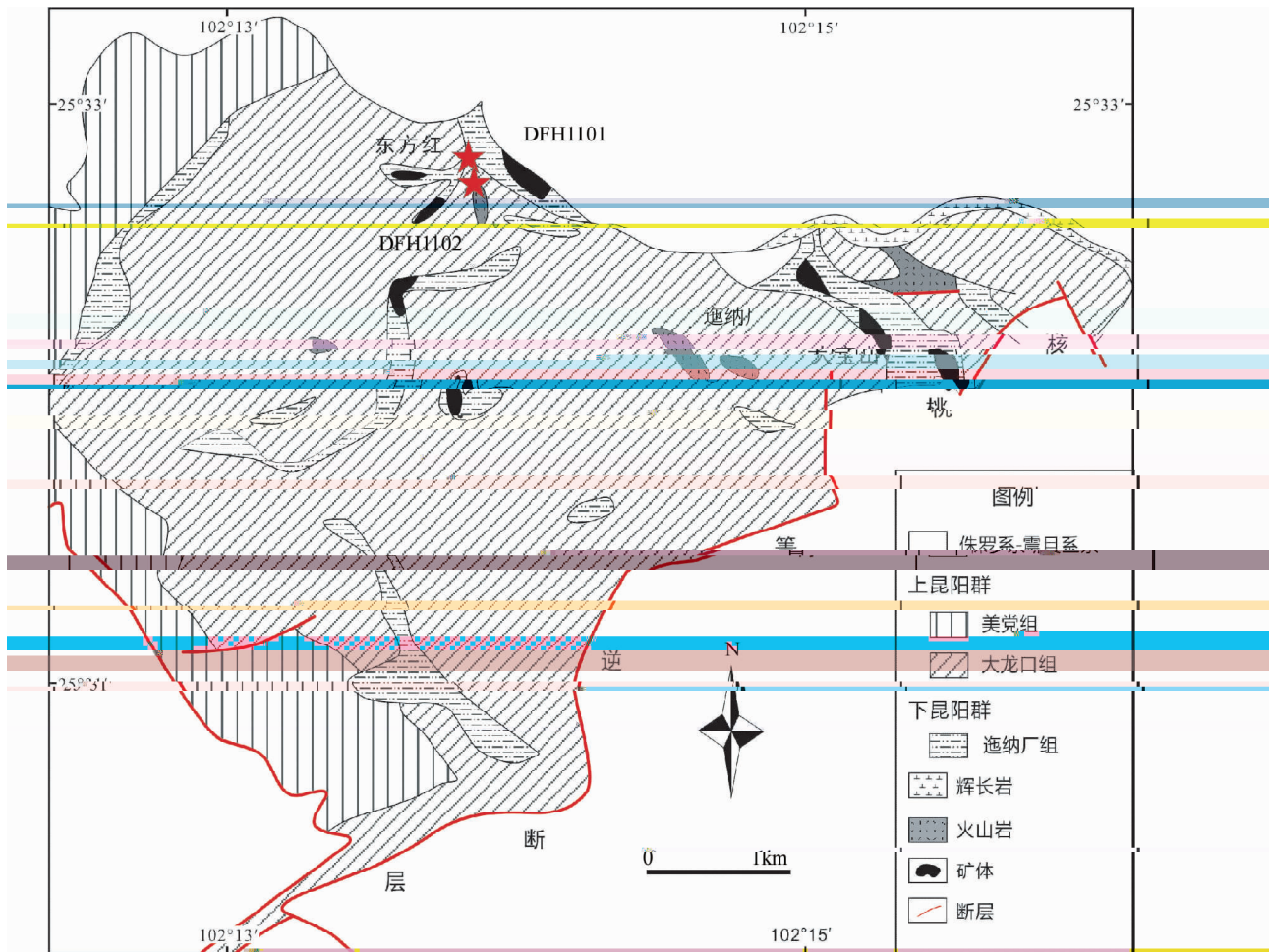
5g

3

5h

5

5i

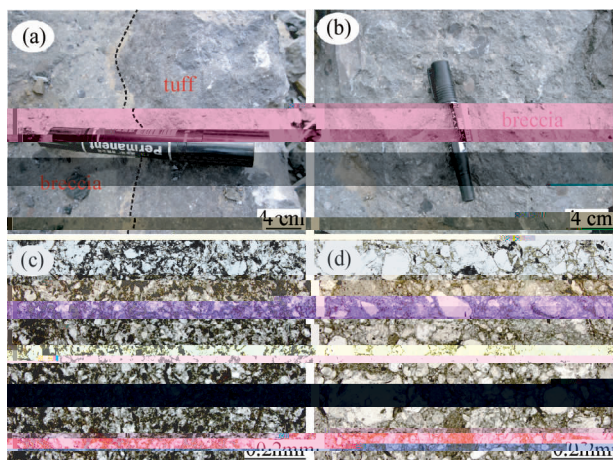


3

1990

Fig. 3 Simplified geological map of the Yinachang deposit in Wuding County Yunnan Province after Wu

1990



4

a - DFH1101 b - DFH1102

c - tuff- d - breccia-

Fig. 4 Photographs and photomicrographs of the representative tuff a c and breccias b d from the Yinachang deposit

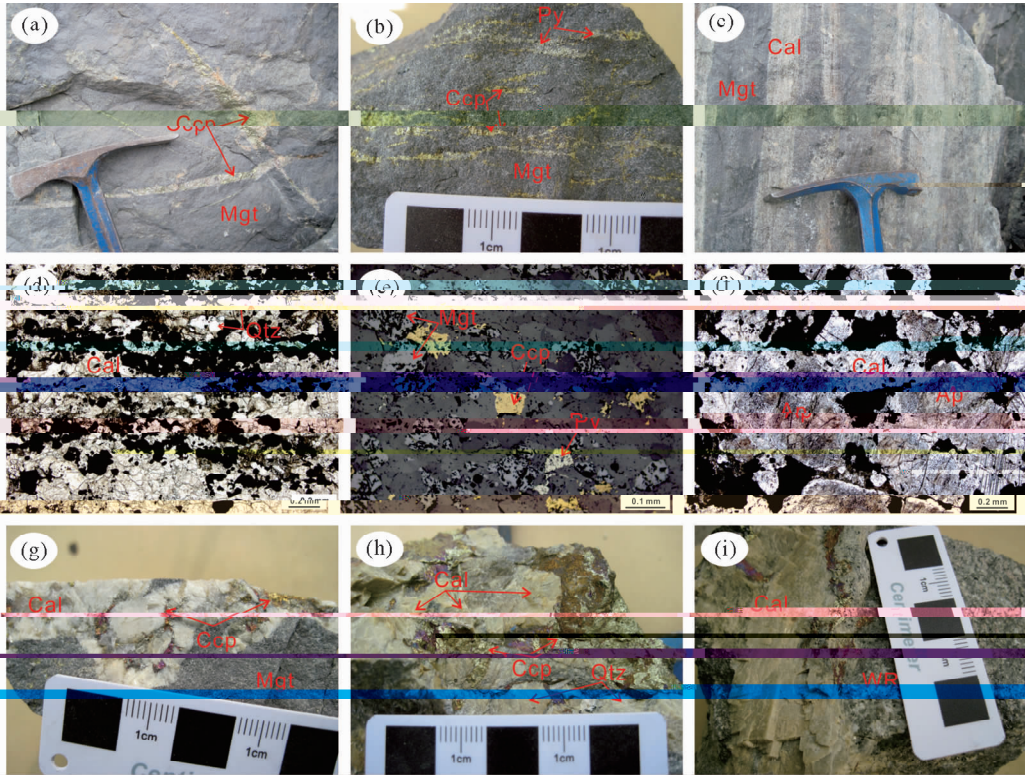
4

LA-ICP-MS U-Pb  
 DFH1101 N 25°32'53.1" E 102°13'34.3"  
 DFH1102 N 25°32'53.1" E 102°13'34.3"

CL

U-Pb



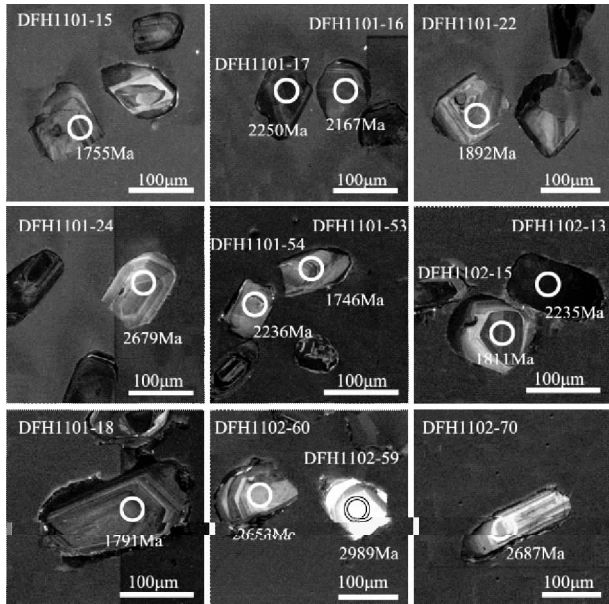


5

a b - c d - e - f - g - h -  
i - . Cep- Cal- Py- Mgt- Ap- Qtz- WR-

Fig. 5 Photographs and photomicrographs of iron-copper ore from the Yinachang deposit

a b -vein-type ore c d -bedded ore e -disseminated ore f -apatite and calcite in the ore g -calcite in the magnetite ore h -calcite in the copper ore i -calcite in the wall-rock. Cep-chalcopyrite Cal-calcite Py-pyrite Mgt-magnetite Ap-apatite Qtz-quartz WR-wall-rock



6

Fig. 6 Representative CL images of the detrital zircon grains for tuff and breccia from the Yinachang deposit

ICP-MS	91500
Plešovice	GJ-1
Si	NIST SRM 610
2011	Zr
Liu	Liu 2010a Hu
2010a b	ICPMSDataCal
	40 ~ 60
	99%
200	Re-Os
ELAN DRC-e ICP-MS	Qi 2010
<sup>190</sup> Os	<sup>185</sup> Re
	0.1g
	200°C
	12h
	Os Os 3mL
	2mol/L HCl
AG 1-X8	Re Qi 2007 2010
3mL ICP-MS	RSD% 3%

Table 1 LA-ICP-MS zircon U-Pb isotopic analyses of tuff and breccia in the Yinachang deposit

	$\times 10^{-6}$		Th/U	$^{207}\text{Pb}/^{206}\text{Pb}$		$^{207}\text{Pb}/^{235}\text{U}$		$^{206}\text{Pb}/^{238}\text{U}$		$^{207}\text{Pb}/^{206}\text{Pb}$		$^{207}\text{Pb}/^{235}\text{U}$		$^{206}\text{Pb}/^{238}\text{U}$		Ma
	Pb	Th		1 $\sigma$	1 $\sigma$	1 $\sigma$	1 $\sigma$	1 $\sigma$	1 $\sigma$	1 $\sigma$	1 $\sigma$	1 $\sigma$	1 $\sigma$	1 $\sigma$		
DFH1101																
-01	152.7	274	0.78	0.1089	0.0029	5.0129	0.1233	0.3251	0.0064	1781	48	1822	21	1815	31	99%
-02	123.9	133	0.48	0.1356	0.0014	7.0601	0.0762	0.3757	0.0023	2172	18	2119	10	2056	11	96%
-03	95.4	152	0.69	0.1186	0.0012	5.7333	0.0613	0.3492	0.0021	1935	19	1936	9	1931	10	99%
-04	80.0	128	0.82	0.1324	0.0013	7.2370	0.0759	0.3950	0.0026	2131	13	2141	9	2146	12	99%
-05	91.7	98	0.56	0.1431	0.0014	8.4020	0.0842	0.4240	0.0025	2265	18	2275	9	2279	11	99%
-06	54.7	66.0	0.60	0.1325	0.0015	7.4449	0.0840	0.4054	0.0028	2132	14	2166	10	2194	13	98%
-07	98.9	85.7	0.52	0.1521	0.0020	10.0328	0.1323	0.4764	0.0031	2369	23	2438	12	2512	13	97%
-08	221.3	119	0.17	0.1074	0.0015	4.5076	0.0628	0.3019	0.0022	1755	26	1732	12	1701	11	98%
-09	137.0	179	0.58	0.1244	0.0014	6.4374	0.0710	0.3727	0.0022	2020	-14	2037	10	2042	10	99%
-10	67.5	101	0.59	0.1096	0.0012	5.1086	0.0595	0.3363	0.0022	1794	21	1838	10	1869	11	98%
-11	88.0	69.5	0.40	0.1416	0.0014	8.7017	0.0874	0.4426	0.0027	2247	17	2307	9	2362	12	97%
-12	92.6	97	0.52	0.1409	0.0013	8.3040	0.0828	0.4251	0.0028	2239	16	2265	9	2284	12	99%
-13	53.1	98	0.63	0.1090	0.0020	4.5260	0.0816	0.2989	0.0026	1783	33	1736	15	1686	13	97%
-14	151.6	45.3	0.15	0.1359	0.0032	8.5099	0.1912	0.4487	0.0041	2176	8	2287	20	2389	18	95%
-15	48.3	78	0.66	0.1074	0.0030	4.8496	0.1339	0.3217	0.0037	1755	52	1794	23	1798	18	99%
-16	88.3	113	0.58	0.1344	0.0012	7.1352	0.0668	0.3823	0.0020	2167	15	2128	8	2087	9	98%
-17	141.2	121	0.39	0.14189	0.1419	03 9	0 2	0689 0	3 10	0	0 186	9 0. 6701%	8	2087	9	98%
7	1	0.1.-11865	0.001 62	1 772	0.00002	9	9 0	23098	177	01620	0 3	0 186	8	2087	9	98%

Continued Table 1

	$\times 10^{-6}$		Th/U	Ma											
	Pb	Th		$^{207}\text{Pb}/^{206}\text{Pb}$	$^{206}\text{Pb}/^{238}\text{U}$	$^{207}\text{Pb}/^{206}\text{Pb}$	$^{207}\text{Pb}/^{235}\text{U}$	$^{206}\text{Pb}/^{238}\text{U}$	$1\sigma$	$1\sigma$					
-36	80.9	209	1.47	0.1200	0.0013	6.3927	0.0761	0.3834	0.0029	19.67	2031	10	2092	14	97%
-37	87.2	64.5	0.39	0.1413	0.0014	8.6286	0.0934	0.4396	0.0030	22.43	2300	10	2349	13	97%
-38	266.3	264	0.37	0.1105	0.0011	5.0255	0.0526	0.3267	0.0018	18.09	1824	9	1822	9	99%
-39	101.1	93.2	0.39	0.1188	0.0014	6.0271	0.0729	0.3643	0.0026	19.39	1980	11	2002	12	98%
-40	103.0	84.7	0.43	0.1444	0.0018	8.8538	0.1100	0.4396	0.0031	22.80	2323	11	2349	14	98%
-41	69.0	74.6	0.55	0.1341	0.0016	7.6710	0.0938	0.4103	0.0030	21.54	2193	11	2216	13	98%
-42	88.9	142	0.67	0.1095	0.0012	5.1544	0.0604	0.3375	0.0023	17.92	1845	10	1875	11	98%
-43	89.6	89.3	0.43	0.1452	0.0015	7.1268	0.0931	0.3524	0.0035	23.00	2127	12	1946	17	91%
-44	266.3	264	0.37	0.1103	0.0010	4.9246	0.0457	0.3202	0.0017	18.06	1806	8	1791	8	99%
-45	161.9	170	0.55	0.1391	0.0013	8.2752	0.0886	0.4270	0.0031	22.17	2262	10	2292	14	98%
-46	129.0	253	0.87	0.1203	0.0012	5.6090	0.0600	0.3350	0.0022	19.61	1917	9	1863	10	97%
-47	211.5	374	0.85	0.1389	0.0014	7.5703	0.0909	0.3905	0.0031	22.13	2181	11	2125	14	97%
-48	109.7	155	0.67	0.1260	0.0013	6.6323	0.0745	0.3783	0.0027	20.44	2064	10	2068	12	99%
-49	173.7	177	0.54	0.1434	0.0013	8.7362	0.0925	0.4378	0.0031	22.69	2311	10	2341	14	98%
-50	137.0	125	0.36	0.1169	0.0011	5.4973	0.0531	0.3382	0.0019	19.10	1900	8	1878	9	98%
-51	215.8	177	0.51	0.1799	0.0016	12.2556	0.1307	0.4904	0.0041	26.54	2624	10	2573	18	98%
-52	98.4	41.0	0.26	0.1785	0.0017	12.9855	0.1377	0.5232	0.0036	26.39	2679	10	2713	15	98%
-53	48.7	68.7	0.57	0.1068	0.0013	4.8869	0.0608	0.3302	0.0027	17.46	1800	10	1839	13	97%
-54	106.4	109	0.56	0.1406	0.0015	8.4237	0.0995	0.4313	0.0031	22.36	2278	11	2312	14	98%
-55	134.8	120	0.39	0.1266	0.0013	6.5019	0.0767	0.3693	0.0027	20.52	2046	10	2026	13	99%
-56	73.4	196	1.40	0.1222	0.0014	5.9134	0.0683	0.3483	0.0022	19.89	1963	10	1926	10	98%
-57	62.0	70.0	0.59	0.1379	0.0014	7.9104	0.0866	0.4133	0.0028	22.11	2221	10	2230	13	99%
-58	36.1	69.7	0.93	0.1208	0.0016	6.0204	0.0861	0.3598	0.0031	19.69	1979	12	1981	15	99%
-59	82.1	263	1.58	0.1116	0.0013	5.0164	0.0616	0.3236	0.0023	18.28	1822	10	1807	11	99%
-60	187.0	197	0.56	0.1432	0.0015	8.3718	0.0911	0.4207	0.0027	22.66	2272	10	2264	12	99%
-61	49.4	77.2	0.93	0.1454	0.0019	8.8411	0.1230	0.4378	0.0035	22.94	2322	13	2341	16	99%
-62	123.4	92.1	0.37	0.1429	0.0015	8.1120	0.0905	0.4081	0.0025	22.63	2244	10	2206	12	98%
-63	215.1	194	0.45	0.1451	0.0014	8.2793	0.0852	0.4102	0.0023	22.89	2262	9	2216	10	97%
-64	133.9	124	0.42	0.1377	0.0014	7.0855	0.0792	0.3696	0.0026	21.98	2122	10	2028	12	95%
-65	160.0	132	0.40	0.1434	0.0014	7.9348	0.0791	0.3978	0.0024	22.69	2224	9	2159	11	97%
-66	79.1	70.6	0.41	0.1253	0.0014	6.7131	0.0808	0.3852	0.0028	20.35	2074	11	2101	13	98%
-67	62.0	61.8	0.57	0.1456	0.0017	9.2008	0.1131	0.4555	0.0035	22.95	2358	11	2420	16	97%
-68	63.2	77.5	0.49	0.1106	0.0014	5.2508	0.0704	0.3418	0.0027	18.10	1861	11	1895	13	98%
-69	123.9	94.3	0.40	0.1459	0.0017	8.7938	0.1075	0.4335	0.0030	22.98	2317	11	2321	13	99%
-70	151.1	340	1.13	0.1213	0.0013	6.1160	0.0688	0.3626	0.0024	19.76	1993	10	1994	11	99%
-71	63.0	75.0	0.64	0.1443	0.0016	8.6918	0.0966	0.4329	0.0027	22.79	2306	10	2319	12	99%



Continued Table 1

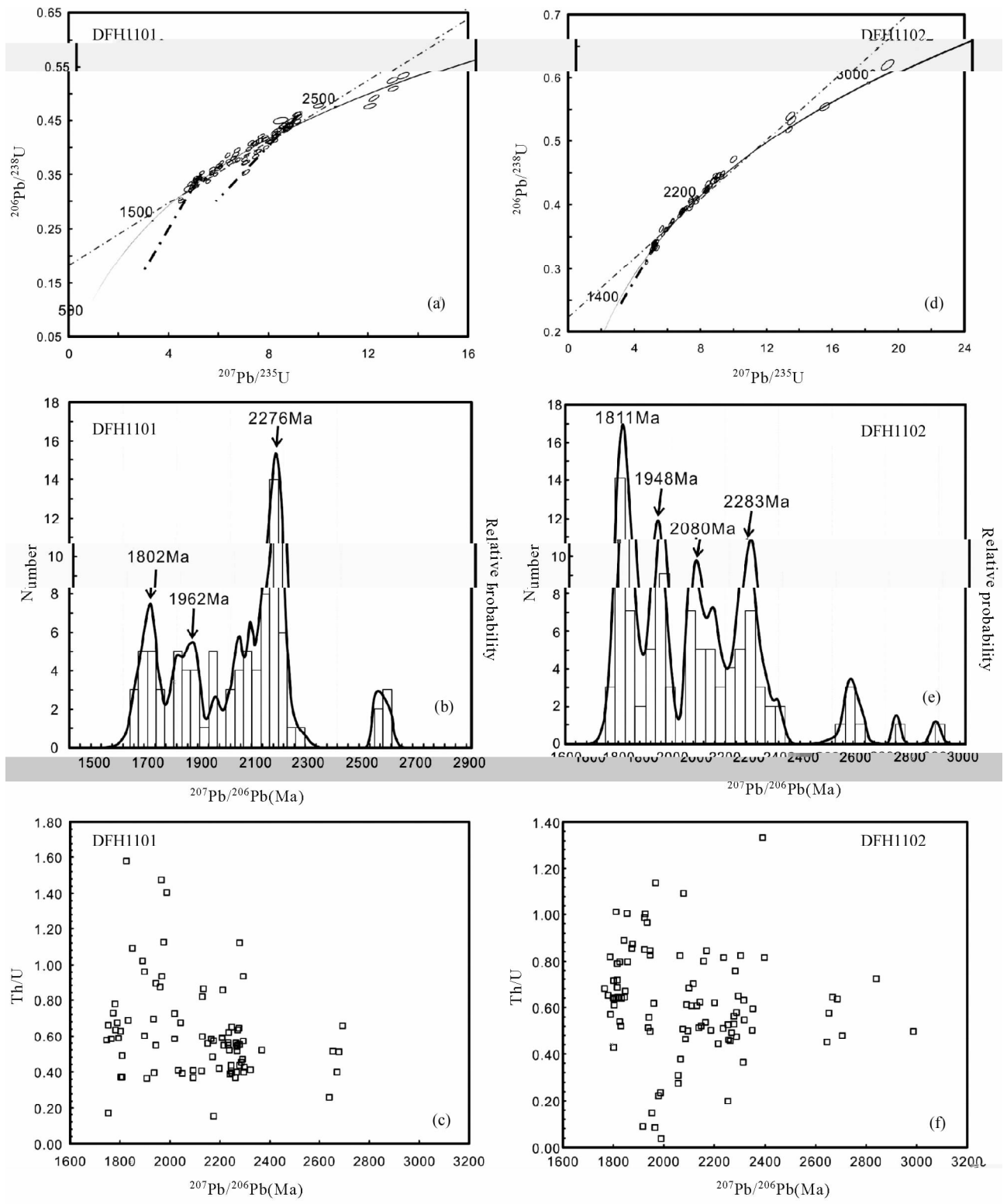
	$\times 10^{-6}$		Th/U	Ma				$1\sigma$	98%							
	Pb	Th		$^{207}\text{Pb}/^{206}\text{Pb}$	$^{207}\text{Pb}/^{235}\text{U}$	$^{206}\text{Pb}/^{238}\text{U}$	$^{207}\text{Pb}/^{235}\text{U}$									
-72	136.9	136	0.66	0.1845	0.0018	13.0323	0.1292	0.5076	0.0030	2694	16	2682	9	2646	13	98%
-73	122.1	150	0.65	0.1418	0.0014	8.3021	0.0890	0.4200	0.0027	2250	50	2265	10	2260	12	99%
-74	144.7	227	0.86	0.1328	0.0013	7.7595	0.0846	0.4192	0.0030	2135	18	2204	10	2257	13	97%
-75	156.1	143	0.41	0.1297	0.0013	6.7816	0.0713	0.3749	0.0023	2094	23	2083	9	2052	11	98%
-76	118.4	169	0.58	0.1080	0.0013	5.0668	0.0618	0.3367	0.0025	1766	21	1831	10	1871	12	97%
-77	88.2	103	0.62	0.1408	0.0015	8.5921	0.1031	0.4386	0.0035	2237	19	2296	11	2344	16	97%
-78	123.2	151	0.55	0.1193	0.0012	6.1333	0.0680	0.3691	0.0027	1946	18	1995	10	2025	13	98%
-79	64.8	96.5	0.72	0.1243	0.0013	6.7847	0.0806	0.3925	0.0030	2020	-14	2084	11	2134	14	97%
-80	63.0	109	0.73	0.1084	0.0012	5.1333	0.0626	0.3408	0.0026	1773	20	1842	10	1890	12	97%
-81	143.8	111	0.37	0.1296	0.0012	7.3295	0.0815	0.4065	0.0031	2094	17	2152	10	2199	14	97%
-82	64.1	65.3	0.55	0.1442	0.0016	8.8574	0.1082	0.4419	0.0035	2280	20	2323	11	2359	16	98%
-83	133.1	168	0.59	0.1379	0.0014	7.1239	0.0875	0.3709	0.0030	2211	17	2127	11	2034	14	95%
-84	79.6	109	0.60	0.1162	0.0014	5.7745	0.0709	0.3580	0.0025	1898	22	1943	11	1973	12	98%
DFH1102																
-01	87.6	164	0.82	0.1092	0.0012	4.9917	0.0618	0.3287	0.0025	1787	22	1818	10	1832	12	99%
-02	24.28	34.6	0.61	0.1103	0.0016	5.2812	0.0836	0.3466	0.0035	1806	21	1866	14	1918	17	97%
-03	36.8	62	0.68	0.1074	0.0016	4.8210	0.0728	0.3235	0.0029	1767	27	1789	13	1807	14	98%
-04	213.4	230	0.49	0.1435	0.0012	7.1364	0.0634	0.3575	0.0017	2270	15	2129	8	1971	8	92%
-05	113.9	114	0.52	0.1338	0.0012	7.5570	0.0714	0.4069	0.0024	2148	17	2180	8	2201	11	99%
-06	62.8	91.4	0.82	0.1548	0.0016	8.9171	0.1226	0.4145	0.0041	2399	18	2330	13	2235	19	95%
-07	53.3	122	1.01	0.1100	0.0013	4.8264	0.0546	0.3159	0.0018	1811	16	1790	10	1770	9	98%
-08	74.5	104	0.68	0.1303	0.0015	6.7038	0.0784	0.3709	0.0025	2102	20	2073	10	2034	12	98%
-09	123.5	154	0.62	0.1334	0.0014	6.9575	0.0832	0.3754	0.0031	2143	19	2106	11	2055	14	97%
-10	252.0	284	0.63	0.1475	0.0018	8.1843	0.0999	0.3968	0.0026	2317	21	2252	11	2154	12	95%
-11	95.2	86.7	0.64	0.1817	0.0017	13.2204	0.1292	0.5231	0.0032	2668	15	2696	9	2712	14	99%
-12	200.3	67.7	0.15	0.1197	0.0012	6.0441	0.0620	0.3623	0.0020	1954	13	1982	9	1993	9	99%
-13	114.0	107	0.51	0.1406	0.0013	8.3927	0.0873	0.4291	0.0030	2235	16	2274	9	2302	13	98%
-14	85.6	91.3	0.50	0.1193	0.0021	6.0186	0.0983	0.3624	0.0029	1946	38	1979	14	1994	14	99%
-15	49.0	76.3	0.64	0.1101	0.0014	5.0646	0.0700	0.3313	0.0029	1811	18	1830	12	1845	14	99%
-16	75.7	131	0.84	0.1193	0.0014	5.9654	0.0721	0.3601	0.0025	1946	21	1971	11	1983	12	99%
-17	33.53	22.3	0.45	0.1794	0.0022	13.4050	0.1688	0.5381	0.0045	2647	53	2709	12	2775	19	97%
-18	49.4	68.7	0.57	0.1094	0.0012	4.9766	0.0554	0.3283	0.0023	1791	20	1815	9	1830	11	99%
-19	61.6	61.1	0.50	0.1368	0.0013	7.6532	0.0773	0.4029	0.0026	2187	17	2191	9	2182	12	99%
-20	79.6	92.6	0.51	0.1188	0.0012	5.8956	0.0590	0.3577	0.0022	1939	23	1961	9	1971	10	99%
-21	49.6	82.1	0.82	0.1275	0.0013	6.7275	0.0734	0.3794	0.0026	2065	13	2076	10	2073	12	99%
-22	63.0	62.8	0.53	0.1442	0.0015	8.5432	0.0972	0.4267	0.0029	2280	19	2291	10	2291	13	99%

Continued Table 1

	$\times 10^{-6}$		Th/U	$^{207}\text{Pb}/^{206}\text{Pb}$		$^{206}\text{Pb}/^{238}\text{U}$		$^{207}\text{Pb}/^{206}\text{Pb}$		$^{207}\text{Pb}/^{235}\text{U}$		$^{206}\text{Pb}/^{238}\text{U}$		$1\sigma$	99%		
	Pb	Th		U	$1\sigma$	U	$1\sigma$	U	$1\sigma$	U	$1\sigma$	U	$1\sigma$				
-23	35.9	58.6	90.3	0.65	0.1089	0.0014	4.8011	0.0596	0.3184	0.0022	1781	23	1785	10	1782	11	99%
-24	124.4	140	328	0.42	0.1102	0.0011	4.8986	0.0548	0.3199	0.0021	1803	19	1802	9	1789	10	99%
-25	47.3	63.4	83.8	0.76	0.1447	0.0016	8.8049	0.1078	0.4384	0.0033	2284	19	2318	11	2343	15	98%
-26	251	503	461	1.09	0.1285	0.0011	7.0057	0.0682	0.3922	0.0024	2080	16	2112	9	2133	11	99%
-27	264.8	149	630	0.24	0.1221	0.0010	6.3192	0.0613	0.3724	0.0023	1987	15	2021	9	2041	11	99%
-28	115.3	209	253	0.83	0.1194	0.0011	5.8358	0.0601	0.3521	0.0022	1947	17	1952	9	1945	11	99%
-29	55.2	102	120	0.85	0.1178	0.0013	5.7559	0.0622	0.3521	0.0020	1924	19	1940	9	1945	10	99%
-30	136.7	271	317	0.85	0.1146	0.0012	5.2842	0.0547	0.3325	0.0020	1873	18	1866	9	1850	10	99%
-31	30.9	60.8	69.6	0.87	0.1146	0.0016	5.2778	0.0815	0.3321	0.0029	1876	26	1865	13	1849	14	99%
-32	23.08	50.6	50.6	1.00	0.1181	0.0018	5.4172	0.0837	0.3324	0.0028	1928	27	1888	13	1850	14	97%
-33	90.2	114	187	0.61	0.1295	0.0013	7.0000	0.0758	0.3890	0.0027	2092	18	2111	10	2118	13	99%
-34	42.1	58.7	71.3	0.82	0.1465	0.0016	9.0346	0.1112	0.4441	0.0031	2305	19	2342	11	2369	14	98%
-35	71.6	158	140	1.14	0.1207	0.0013	6.1774	0.0706	0.3686	0.0027	1969	20	2001	10	2023	13	98%
-36	22.71	23.3	45.7	0.51	0.1330	0.0018	7.4644	0.0996	0.4056	0.0033	2139	23	2169	12	2195	15	98%
-37	104.1	91.0	198	0.46	0.1424	0.0015	8.4429	0.0923	0.4268	0.0026	2257	19	2280	10	2291	12	99%
-38	82.6	72.3	159	0.45	0.1431	0.0017	8.4088	0.0993	0.4223	0.0028	2265	21	2276	11	2271	12	99%
-39	24.67	22.2	50.1	0.44	0.1391	0.0019	7.8226	0.1091	0.4057	0.0034	2216	24	2211	13	2195	16	99%
-40	70.6	86.8	143	0.61	0.1308	0.0014	7.1540	0.0789	0.3937	0.0026	2109	14	2131	10	2140	12	99%
-41	106.1	115	227	0.51	0.1283	0.0013	6.9709	0.0784	0.3906	0.0028	2076	18	2108	10	2126	13	99%
-42	63.38	14.7	165	0.09	0.1173	0.0012	5.7424	0.0639	0.3532	0.0024	1917	23	1938	10	1950	11	99%
-43	61.7	62.6	112	0.56	0.1443	0.0016	8.9434	0.1008	0.4460	0.0029	2279	19	2332	10	2378	13	98%
-44	70.20	15.1	179	0.08	0.1200	0.0013	6.0008	0.0692	0.3605	0.0026	1967	19	1976	10	1984	12	99%
-45	33.0	74.6	74.4	1.00	0.1134	0.0015	5.2027	0.0722	0.3307	0.0026	1855	24	1853	12	1842	12	99%
-46	142.31	13.1	354	0.04	0.1222	0.0013	6.3090	0.0731	0.3724	0.0026	1991	19	2020	10	2041	12	98%
-47	139.7	181	338	0.54	0.1115	0.0012	5.2756	0.0639	0.3409	0.0026	1825	25	1865	10	1891	12	98%
-48	83.7	82.5	179	0.46	0.1291	0.0014	6.9444	0.0832	0.3890	0.0028	2087	14	2104	11	2118	13	99%
-49	37.6	80.0	83.1	0.96	0.1142	0.0015	5.3632	0.0736	0.3401	0.0028	1933	24	1879	12	1887	13	99%
-50	79.5	72.0	143	0.50	0.1502	0.0014	9.3526	0.0946	0.4493	0.0029	2350	16	2373	9	2392	13	99%
-51	90.4	65.8	137	0.48	0.1860	0.0018	13.3917	0.1384	0.5196	0.0033	2706	17	2708	10	2697	14	99%
-52	76.6	135	197	0.68	0.1110	0.0012	4.7530	0.0564	0.3088	0.0019	1817	20	1777	10	1735	10	97%
-53	69.2	47.5	13025	7	0	0	3	0	0	0	0	0	0	8			

Continued Table 1

	$\times 10^{-6}$		Th/U	Ma				$1\sigma$	206Pb/ <sup>238</sup> U	$1\sigma$	207Pb/ <sup>235</sup> U	$1\sigma$	206Pb/ <sup>238</sup> U	$1\sigma$	207Pb/ <sup>235</sup> U	$1\sigma$	206Pb/ <sup>238</sup> U	$1\sigma$											
	Pb	Th		U	207Pb/ <sup>206</sup> Pb	207Pb/ <sup>235</sup> U	206Pb/ <sup>238</sup> U												207Pb/ <sup>206</sup> Pb	207Pb/ <sup>235</sup> U	206Pb/ <sup>238</sup> U	207Pb/ <sup>206</sup> Pb	207Pb/ <sup>235</sup> U	206Pb/ <sup>238</sup> U	207Pb/ <sup>206</sup> Pb	207Pb/ <sup>235</sup> U	206Pb/ <sup>238</sup> U	207Pb/ <sup>206</sup> Pb	207Pb/ <sup>235</sup> U
	$1\sigma$	$1\sigma$		$1\sigma$	$1\sigma$	$1\sigma$	$1\sigma$												$1\sigma$	$1\sigma$	$1\sigma$	$1\sigma$	$1\sigma$	$1\sigma$	$1\sigma$	$1\sigma$	$1\sigma$	$1\sigma$	$1\sigma$
-59	31.92	19.8	40.0	0.50	0.2197	0.0026	18.8909	0.2486	0.6217	0.0055	2989	19	3036	13	3117	22	97%												
-60	55.9	47.1	82.0	0.57	0.1800	0.0020	13.4778	0.1675	0.5401	0.0042	2653	18	2714	12	2784	17	97%												
-61	26.04	43.5	61.0	0.71	0.1101	0.0016	5.1550	0.0768	0.3391	0.0027	1802	26	1845	13	1882	13	98%												
-62	112.5	59.0	266	0.22	0.1217	0.0014	6.3109	0.0740	0.3741	0.0024	1981	53	2020	10	2048	11	98%												
-63	47.2	55.3	85.2	0.65	0.1457	0.0019	8.8067	0.1194	0.4369	0.0033	2295	22	2318	12	2337	15	99%												
-64	76.7	119	185	0.64	0.1100	0.0012	5.1465	0.0640	0.3371	0.0025	1799	16	1844	11	1873	12	98%												
-65	44.3	70.9	106	0.67	0.1129	0.0014	5.2148	0.0658	0.3337	0.0023	1847	23	1855	11	1856	11	99%												
-66	29.14	52.5	65.9	0.80	0.1116	0.0016	5.2541	0.0746	0.3412	0.0024	1825	26	1861	12	1892	12	98%												
-67	63.2	128	130	0.99	0.1179	0.0014	5.8883	0.0706	0.3604	0.0025	1925	20	1960	10	1984	12	98%												
-68	51.6	65.7	126	0.52	0.1120	0.0014	5.2242	0.0701	0.3365	0.0025	1832	23	1857	11	1870	12	99%												
-69	86.1	82.9	115	0.72	0.2020	0.0024	15.5602	0.1927	0.5550	0.0039	2842	14	2850	12	2846	16	99%												
-70	46.0	42.0	66.2	0.64	0.1836	0.0022	13.5549	0.1696	0.5334	0.0044	2687	20	2719	12	2756	19	98%												
-71	59.9	85.4	105	0.81	0.1408	0.0016	8.4530	0.1001	0.4327	0.0031	2237	20	2281	11	2318	14	98%												
-72	54.9	92.8	130	0.72	0.1110	0.0013	5.1143	0.0623	0.3320	0.0023	1817	21	1838	10	1848	11	99%												
-73	19.44	20.6	35.7	0.58	0.1450	0.0021	8.8198	0.1403	0.4382	0.0042	2289	24	2320	15	2343	19	99%												
-74	43.9	62.1	96.8	0.64	0.1129	0.0014	5.6604	0.0775	0.3616	0.0032	1847	18	1925	12	1990	15	96%												
-75	52.0	69.6	99.6	0.70	0.1313	0.0015	7.4376	0.0966	0.4073	0.0032	2117	21	2166	12	2202	15	98%												
-76	51.9	81.3	128	0.64	0.1115	0.0014	5.0472	0.0683	0.3250	0.0023	1833	18	1827	11	1814	11	99%												
-77	135.6	54.7	276	0.20	0.1420	0.0016	8.3715	0.0974	0.4228	0.0028	2254	20	2272	11	2273	13	99%												
-78	48.6	53.1	99.1	0.54	0.1351	0.0018	7.4327	0.1073	0.3946	0.0031	2165	23	2165	13	2144	14	99%												
-79	79.1	93.5	154	0.61	0.1324	0.0015	7.4413	0.0910	0.4038	0.0029	2131	20	2166	11	2187	13	99%												
-80	105.5	131	236	0.56	0.1191	0.0012	5.9883	0.0654	0.3611	0.0024	1943	19	1974	10	1987	11	99%												
-81	173.4	174	320	0.54	0.1476	0.0014	9.0175	0.0919	0.4386	0.0028	2318	21	2340	9	2344	12	99%												
-82	150.7	227	284	0.80	0.1346	0.0013	7.4881	0.0761	0.3989	0.0024	2159	17	2172	9	2164	11	99%												
-83	160.0	213	347	0.62	0.1203	0.0012	6.0871	0.0616	0.3630	0.0020	1961	23	1988	9	1996	10	99%												
-84	54.2	84.6	132	0.64	0.1113	0.0014	5.0491	0.0645	0.3255	0.0022	1820	22	1828	11	1816	11	99%												
-85	30.4	56.5	70.9	0.80	0.1136	0.0018	5.3533	0.0895	0.3403	0.0033	1858	29	1877	14	1888	16	99%												
-86	111.2	68.5	250	0.27	0.1270	0.0014	6.7727	0.0780	0.3827	0.0025	2057	18	2082	10	2089	12	99%												
-87	80.5	84.9	143	0.59	0.1507	0.0016	9.3012	0.1041	0.4435	0.0029	2353	19	2368	10	2366	13	99%												
-88	44.90	36.6	97.4	0.38	0.1276	0.0015	6.9153	0.0855	0.3895	0.0028	2066	16	2101	11	2121	13	99%												
-89	86.3	134	159	0.84	0.1355	0.0014	7.7422	0.0859	0.4104	0.0029	2170	17	2202	10	2217	13	99%												
-90	149.3	102	331	0.31	0.1271	0.0013	6.8407	0.0719	0.3864	0.0023	2058	18	2091	9	2106	11	99%												
-91	58.7	53.0	112	0.47	0.1448	0.0016	8.6416	0.1050	0.4291	0.0031	2287	19	2301	11	2302	14	99%												
-92	39.6	60.6	95.7	0.63	0.1103	0.0015	5.1442	0.0720	0.3354	0.0024	1806	24	1843	12	1865	12	98%												
-93	61.9	62.3	119	0.53	0.1415	0.0018	8.3089	0.1079	0.4230	0.0029	2256	50	2265	12	2274	13	99%												



7 U-Pb  $^{207}\text{Pb}/^{206}\text{Pb}$  Th/U- $^{207}\text{Pb}/^{206}\text{Pb}$   
 Fig. 7 Plot of U-Pb concordant curve  $^{207}\text{Pb}/^{206}\text{Pb}$  age frequency and Th/U- $^{207}\text{Pb}/^{206}\text{Pb}$  age diagram of the de

Table 2 Re-Os isotope compositions for chalcopyrite from the Yinachang deposit

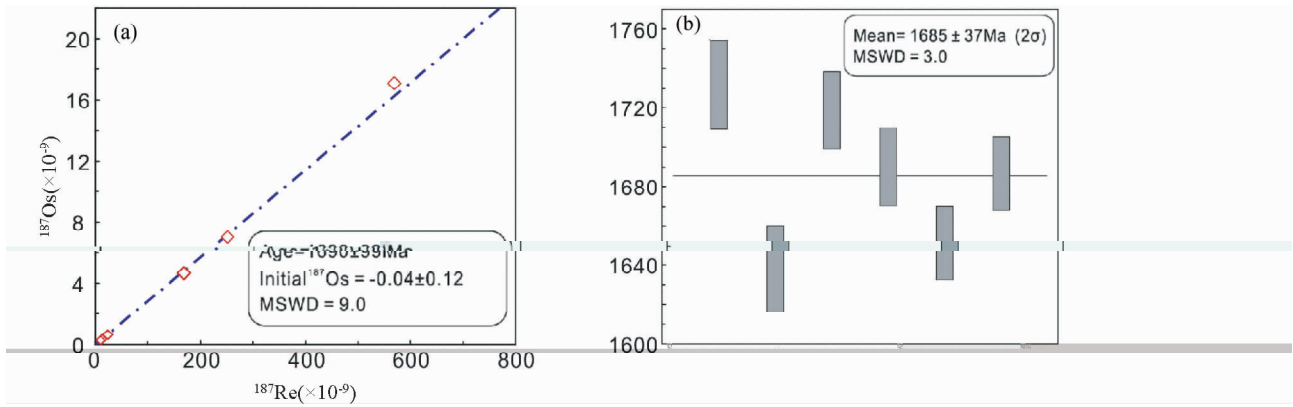
	$^{187}\text{Re}$ $\times 10^{-9}$	$1\sigma$	$^{187}\text{Os}$ $\times 10^{-9}$	$1\sigma$	Re $\times 10^{-9}$	$1\sigma$	Os $\times 10^{-9}$	$1\sigma$	Ma	$1\sigma$
YNC1006	562.306	16.269	16.881	0.314	898.253	25.989	0.023	0.006	1732	23
10YNC-40	161.659	2.145	4.455	0.061	258.242	3.426	0.017	0.001	1638	22
YNC1010	4.615	0.108	0.118	0.003	7.373	0.172	0.003	0.000	1719	20
10YNC-32	12.859	0.300	0.366	0.004	20.541	0.480	0.004	0.000	1690	20
10YNC-41	246.010	30.390	6.836	0.079	392.988	48.547	0.005	0.001	1651	19
YNC1112	4.388	0.149	0.073	0.005	7.010	0.239	0.002	0.000	1687	19

## 5

## 5.1 U-Pb

		LA-ICP-MS	U-Pb
	1 6		CL
7		U-Pb	$^{207}\text{Pb}/$
$^{206}\text{Pb}$		Th/U- $^{207}\text{Pb}/^{206}\text{Pb}$	
	DFH1101	2000	
84			95%
	$^{207}\text{Pb}/^{206}\text{Pb}$	$1746 \pm 22\text{Ma}$	$^{207}\text{Pb}/^{206}\text{Pb}$
	$2694 \pm 16\text{Ma}$	5	2500Ma
			1.75 ~ 1.85Ga
1.90 ~ 2.00Ga	2.20 ~ 2.35Ga		
	$^{207}\text{Pb}/^{206}\text{Pb}$		$1796 \pm 15\text{Ma}$ n
= 16	MSWD = 1.5	$2262 \pm 12\text{Ma}$ n = 34	MSWD = 3.5
		1800Ma	1960Ma
			2270Ma
7b		CL	
	6	Th/U	0.1
0.4 ~ 1.0	7c		
	DFH1102	2500	
	93		
95%	$^{207}\text{Pb}/^{206}\text{Pb}$	$1767 \pm 27\text{Ma}$	
	$^{207}\text{Pb}/^{206}\text{Pb}$	$2989 \pm 19\text{Ma}$	7
	2500Ma		1.75
~ 1.88Ga	1.90 ~ 2.00Ga	2.02 ~ 2.20Ga	2.30 ~ 2.40Ga
		$^{207}\text{Pb}/^{206}\text{Pb}$	
	$1796 \pm 9\text{Ma}$ n = 19	MSWD = 0.71	
	1800Ma	1950Ma	2080Ma
			2280Ma
			ää
7e		CL	
6	Th/U	0.2	0.4
~ 1.0	7f		p
			U-Pb



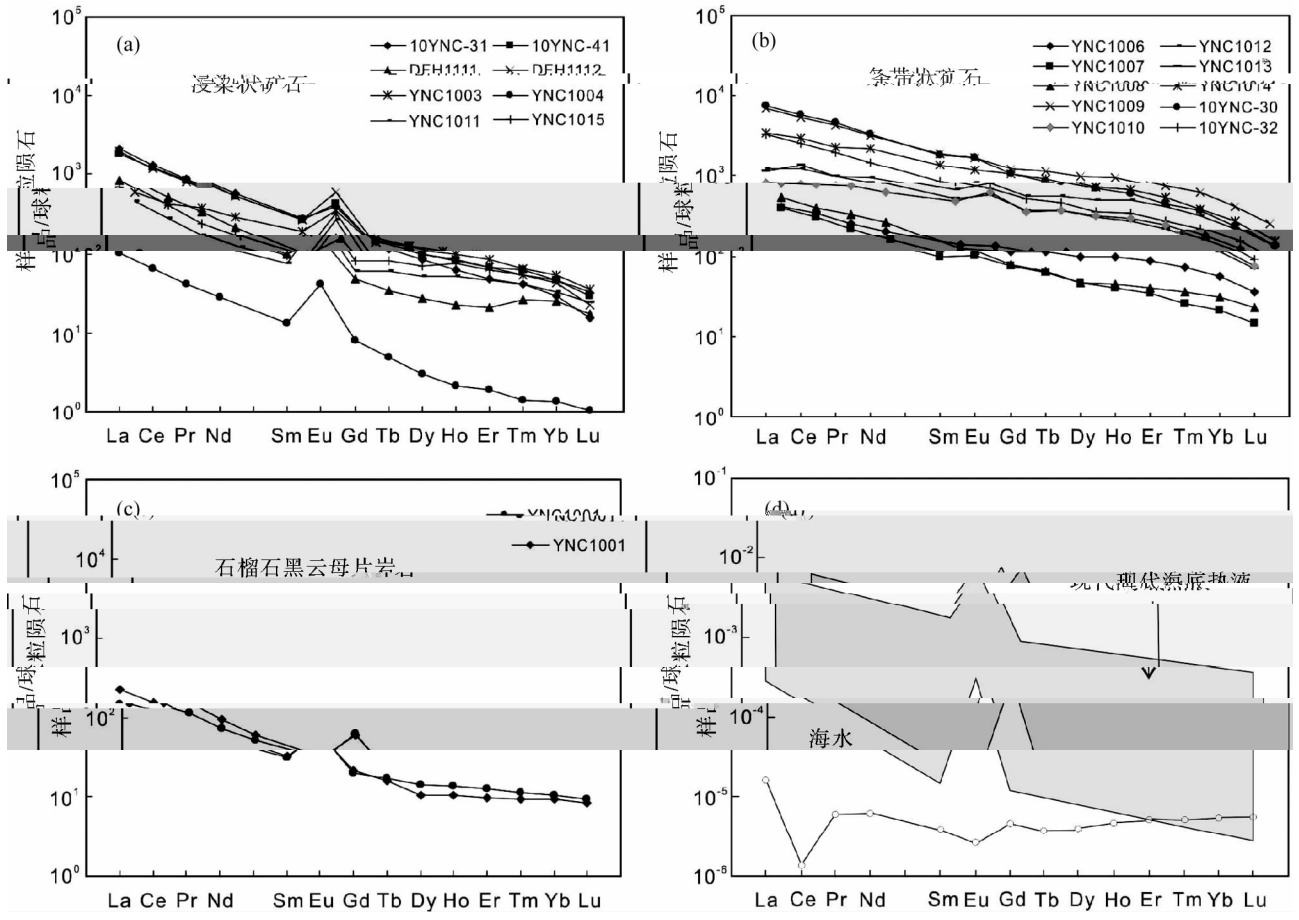


8 Re-Os a b  
 Fig. 8 Isochrone age diagram a and weighted average of model age b of Re-Os isotope for chalcopyrite of the Yinachang deposit

		$\Sigma \text{REE} = 207$			
	$\times 10^{-6} \sim 270 \times 10^{-6}$			1780Ma	U-Pb 1742 ±
	La/Yb <sub>N</sub> 14.1 ~ 23.9	La/Sm <sub>N</sub> 4.8	13Ma Zhao	2010	
	~7.1 LREE/HREE 11.2 ~ 16.9		U-Pb	1690 ± 32Ma Zhao	2010
		$\delta \text{Eu}$		1.7Ga	
	= 2.31 ~ 2.50	$\delta \text{Ce} = 1.1$	3	9c	U-Pb 1711 ± 4Ma
					2012 U-Pb 1.7Ga
6				2008 Greentree and Li	2008 Zhao and Zhou
			2011		1.7Ga
6.1					U-Pb 1695
	1954		± 20Ma	2009	
			1710 ± 8Ma	U-Pb	2011
		1990			
				~ 1800Ma ~ 1950Ma ~ 2080Ma	
1993		1995	~ 2280Ma	2.5Ga	
		Zhang	2006	Greentree	
and Li	2008 Zhao	2010			
			LA-ICP-MS U-Pb		
	DFH1101			1746 ±	
22Ma			U 120 × 10 <sup>-6</sup>	Th	
		Th/U 0.57			
	68.7 × 10 <sup>-6</sup>				
	DFH1102	<sup>207</sup> Pb/ <sup>206</sup> Pb		1767 ±	
27Ma	U 91 × 10 <sup>-6</sup>	Th 62 × 10 <sup>-6</sup>		Th/U	
0.68			6.2	Fe-Cu-REE	
	<sup>207</sup> Pb/ <sup>206</sup> Pb	1750Ma		-	
1750Ma					







9 a b c  
 d Craddock 2010 Elderfield and Greaves 1982

Boynton 1984  
 Fig. 9 Chondrite-normalized REE patterns for disseminated ores a banded ores b and garnet biotite schist c of the Yinachang deposit  
 REE patterns for submarine hydrothermal fluids after Craddock 2010 REE pattern for seawater after Elderfield and Greaves 1982 chondrite-normalizing values after Boynton 1984

IOCG

7

1.7Ga

1 LA-ICP-MS U-Pb

1750Ma

1.7Ga Columbia Rogers and Santosh 2002

2 Fe-Cu-REE Re-Os 1690 ± 99Ma

1.7Ga

Zhao 2002

3

Columbia 2011 Wang 2012 Yu 2012 1.7Ga

Fe-Cu

U-Pb

Re-Os

## References

- Boynton WV. 1984. Geochemistry of the rare-earth elements Meteorite studies. In Henderson P ed. . Rare Earth Element Geochemistry. Elsevier 63 – 114
- Chang XY Zhu BQ Sun DZ Qiu HN and Zou R. 1997. Isotope geochemistry study of Dongchuan copper deposits in middle Yunnan Province SW China I. Stratigraphic chronology and application of geochemical exploration by lead isotopes. *Geochimica* 26 2 32 – 38 in Chinese with English abstract
- Chen HS. 1994. Isotopic Geochemistry. Hangzhou Zhejiang University Press 28 – 39 in Chinese
- Chen TY. 1993. The stratigraphic sequence review of Kunyang Group in Dongchuan region and recommends for future work. *Yunnan Geology* 12 1 126 – 129 in Chinese

- New  $^{40}\text{Ar}$ - $^{39}\text{Ar}$  evidence for ore-forming process during Jinning-Chengjiang Period in Dongchuan type copper deposits Yunnan. *Mineral Deposits* 21 2 129 – 136 in Chinese with English abstract
- Ran CY. 1989. Formation Mechanism of Stratabound Copper Deposit in Kangdian Axis. Beijing Geological Publishing House 1 – 45 in Chinese with English abstract
- Rogers JJW and Santosh M. 2002. Configuration of Columbia a Mesoproterozoic supercontinent. *Gondwana Research* 5 1 5 – 22
- Stein HJ Sundblad K Markey RJ Morgan JW and Motuza G. 1998. Re-Os ages for Archean molybdenite and pyrite Kuittila-Kivisuo Finland and Proterozoic molybdenite Kabeliai Lithuania Testing the chronometer in a metamorphic and metasomatic setting. *Mineralium Deposita* 33 4 329 – 345
- Stein HJ Morgan JW and Schersten A. 2000. Re-Os dating of Low-level highly radiogenic LLHR sulfides The Harnas gold deposit southwest Sweden records continental-scale tectonic events. *Economic Geology* 95 8 1657 – 1671
- Sun Y Shu XL and Xiao YF. 2006. Isotopic geochemistry of the Lala copper deposit Sichuan Province China and its metallogenetic significance. *Geochimica* 35 5 553 – 559 in Chinese with English abstract
- Sun ZM Yin FG Guan JL Liu JH Liu JM Geng QR and Wang LQ. 2009. SHRIMP U-Pb dating and its stratigraphic significance of tuff zircons from Heishan Formation of Kunyang Group Dongchuan area Yunnan Province China. *Geological Bulletin of China* 28 7 896 – 900 in Chinese with English abstract
- Wang LJ Yu JH Griffin WL and O' Reilly SY. 2012. Early crustal evolution in the western Yangtze Block Evidence from U-Pb and Lu-Hf isotopes on detrital zircons from sedimentary rocks. *Precambrian Research* 222 – 223 368 – 385
- Wu KW. 2008. A study on geochemistry and ore-forming mechanism of the Dahongshan stratiform copper deposit in Yunnan Province. Master Degree Thesis. Guiyang Institute of Geochemistry CAS 1 – 95 in Chinese with English summary
- Wu MD Duan JS Song XL Chen LZ and Shan XP. 1990. Geology of Kunyang Group in Yunnan Province. Kunming Scientific Press of Yunnan Province 1 – 223 in Chinese
- Xue BG. 1999. A discussion about the stratigraphic sequence of Kunyang Group according to the Fe ore horizon of Tiejianshan in Dongchuan. *Yunnan Geology* 18 4 469 – 475 in Chinese with English abstract
- Yang H Liu FL Du LL Liu PH and Wang F. 2012. Zircon U-Pb dating for metavolcanites in the Laochanghe Formation of the Dahongshan Group in southwestern Yangtze Block and its geological significance. *Acta Petrologica Sinica* 28 9 2294 – 3014 in Chinese with English abstract
- Yang YM. 2004. Study on geochemistry of Fe-Cu-REE deposit in Kunyang Group in Mid-Proterozoic-exemplified by the Yinachang Fe-Cu-REE deposit. Ph. D. Dissertation. Guiyang Institute of Geochemistry CAS 1 – 86 in Chinese with English summary
- Yang YM Tu GZ and Hu RZ. 2004. REE and trace element geochemistry of Yinachang Fe-Cu-REE deposit Yunnan Province China. *Chinese Journal of Geochemistry* 23 3 265 – 274
- Yang YM Tu GZ and Hu RZ. 2004. REE geochemistry of Yinachang Fe-Cu-REE deposit in Yunnan Province. *Acta Mineralogica Sinica* 24 3 301 – 308 in Chinese with English abstract
- Yang YM Tu GZ Hu RZ and Shi XF. 2005. Sm-Nd isotopic geochronology of the Yinachang Fe-Cu-REE deposit at Wuding Yunnan Province and its geologic significance. *Chinese Science Bulletin* 50 18 2090 – 2096
- Ye L Liu YP Li CY and Liu JJ. 2004a. Ar-Ar isotopic age of Yinachang copper deposit Wuding Yunnan Province China and its implications. *Acta Mineralogica Sinica* 24 4 411 – 414 in Chinese
- Ye L Liu YP Li CY and Liu JJ. 2004b. The Ar-Ar isotopic age in Dongchuan Taoyuan type copper deposit Yunnan Province and its significance. *Journal of Mineralogy and Petrology* 24 2 57 – 60 in Chinese
- Yin FG Sun ZM and Bai JK. 2011. Stratigraphic framework of the mesoproterozoic in Dongchuan and central Yunnan region. *Journal of Stratigraphy* 35 1 49 – 54 in Chinese with English abstract
- Yu JH O' Reilly SY Zhou MF Griffin WL and Wang LJ. 2012. U-Pb geochronology and Hf-Nd isotopic geochemistry of the Badu Complex southeastern China Implications for the Precambrian crustal evolution and paleogeography of the Cathaysia Block. *Precambrian Research* 222 – 223 424 – 449
- Zhang CH Gao LZ Wu ZJ Shi XY Yan QR and Li DJ. 2007. SHRIMP U-Pb zircon age of tuff from the Kunyang Group in central Yunnan Evidence for Grenvillian orogeny in south China. *Chinese Science Bulletin* 52 11 1517 – 1525
- Zhang SB Zheng YF Wu YB Zhao ZF Gao S and Wu FY. 2006. Zircon U-Pb age and Hf isotope evidence for 3.8Ga crustal remnant and episodic reworking of Archean crust in South China. *Earth and Planetary Science Letters* 252 1 – 2 56 – 71
- Zhang YB Wang H Xu CY and Wei QR. 1996. Discovery and significance of the carbonatite of Kunyang Group in the central of Yunnan. *Geological Science and Technology Information* 15 3 14 – 18 in Chinese with English abstract
- Zhang YB Bi H Yu LS Sun SH Qiu JX Xu CY and Wang RJ. 2008. The evidence of ore-bearing dolomite replaces mantle carbonatite magma and eruption in the middle of Kunyang rift central Yunnan. *Progress in Natural Science* 18 7 778 – 788 in Chinese
- Zhao GC Cawood PA Wilde SA and Sun M. 2002. Review of global 2.1 ~ 1.8Ga orogens Implications for a pre-Rodinia supercontinent. *Earth-Science Reviews* 59 125 – 162
- Zhao XF. 2010. Paleoproterozoic crustal evolution and Fe-Cu metallogeny of the western Yangtze Block SW China. Ph. D. Dissertation. Hong Kong University of Hong Kong 1 – 192
- Zhao XF Zhou MF Li JW. 2010. Late Paleoproterozoic to Early Mesoproterozoic Dongchuan Group in Yunnan SW China Implications for tectonic evolution of the Yangtze Block. *Precambrian Research* 182 1 – 2 57 – 69
- Zhao XF and Zhou MF. 2011. Fe-Cu deposits in the Kangdian region SW China A Proterozoic IOCG iron-oxide-copper-gold metallogenic province. *Mineralium Deposita* 46 7 731 – 747
- Zhao XF Zhou MF Hitzman MW. 2012. Late Paleoproterozoic to Early Mesoproterozoic Tangdan sedimentary rock-hosted strata-bound copper deposit Yunnan Province Southwest China. *Economic Geology* 107 2 357 – 375
- Zhao XK and Shan WG. 1993. The Yinachang Formation belongs to and the characteristic of structure and metamorphic. *Yunnan Geology* 12 1 60 – 66 in Chinese
- Zhong SH. 1993. To distinguish the top of Kunyang Group in Dongchuan-Yimen region from the geophysical achievements. *Yunnan Geology* 12 1 123 – 125 in Chinese

